

QUOTE# 001

CONTRACT PRICING WORKSHEET

End User: TITUS COUNTY PCT 4	Contractor: CALDWELL COUNTRY
Contact Name: AL RIDDLE	CALDWELL COUNTRY
Email: TITUSTXPCT1@GMAIL.COM	Prepared By: Averyt Knapp
Phone #: 903-717-1462	Email: aknapp@caldwellcountry.com
Fax #:	Phone #: 979-567-6116
Location City: MOUNT PLEASANT, TX	Fax #: 979-567-4376
Date Prepared: NOVEMBER 7, 2019	Address: P. O. Box 27, Caldwell, TX 77836
Contract Number: BUY BOARD #601-19	Tax ID # 14-1856872

Product Description: 2020 CHEVROLET SILVERADO MD CC56403

A Base Price & Options: \$41,445

B Fleet Quote Option:

Code	Description	Cost	Code	Description	Cost
	4X2-REGULAR CAB, 141" WHEELBASE, 60" CAB TO AXLE, 18,000#GVWR, 6.6L- DURAMAX DIESEL, 6- SPD ALLISON, 4.30 LIMITED SLIP REAR AXLE, 40-20-40 VINYL SEATS, FULL RUBBER FLOOR, AIR CONDITION, AMFM- STEREO, TILT, 7,000# FRONT AXLE AND SUSPENSION, 11,000# REAR AXLE AND SUSPENSION, OEM INTEGRATED TRAILER BRAKE CONTROLLER, 225/70R19.5G GOODYEAR(6), NO SPARE	INCL			
	GM WARRANTY 5YR/100,000 MILES POWERTRAIN @ N/C	INCL		CALDWELL COUNTRY PO BOX 27 CALDWELL, TEXAS 77836	
Subtotal B					INCL

C Unpublished Options

Code	Description	Cost	Code	Description	Cost

Subtotal C

D Other Price Adjustments (Installation, Delivery, Etc...)	
Subtotal D (FOB SANDLIN MOTOR)	INCL
E Unit Cost Before Fee & Non-Equipment Charges (A+B+C+D)	
Quantity Ordered	1
Subtotal E	\$41,445
F Non-Equipment Charges (Trade-In, Warranty, Etc...)	
BUY BOARD FEE	\$400
G. Color of Vehicle: WHITE	
H. Total Purchase Price (E+F)	
	\$41,845
Estimated Delivery Date:	120-150 DAYS APPX



ELLIOTT Ford

Preview Order 1022 - F5G 4x2 Reg Chas Cab DRW: Order Summary Time of Preview: 10/22/2019 09:51:40

Dealership Name: Elliott Ford

Sales Code : F52419

Dealer Rep. g-guest1	Type	Stock	Vehicle Line	Superduty	Order Code 1022
Customer Name	Priority Code	80	Model Year	2020	Price Level 020

DESCRIPTION	MSRP	DESCRIPTION	MSRP
F550 4X2 CHASSIS CAB DRW/145	\$40365	4.30 RATIO LIMITED SLIP AXLE	\$360
145 INCH WHEELBASE	\$0	LESS TIRE INFLATION MONITOR	\$0
OXFORD WHITE	\$0	18000# GVWR PACKAGE	\$0
VINYL 40/20/40 SEATS	\$0	50 STATE EMISSIONS	\$0
MEDIUM EARTH GRAY	\$0	TRAILER BRAKE CONTROLLER	\$270
PREFERRED EQUIPMENT PKG.660A	\$0	HIGH CAPACITY TRAILER TOW PKG	\$580
.XL TRIM	\$0	TRANS POWER TAKE-OFF PROVISION	\$0
.AIR CONDITIONING -- CFC FREE	\$0	40 GAL AFT OF AXLE FUEL TNK	\$0
.AM/FM STEREO MP3/CLK	\$0	FUEL CHARGE	\$0
6.7L POWER STROKE V8 DIESEL	\$9325	PRICED DORA	\$0
10-SPEED AUTOMATIC	\$0	DESTINATION & DELIVERY	\$1595
225/70R19.5G BSW ALL POSITION	\$0		
TOTAL BASE AND OPTIONS			MSRP \$52495
DISCOUNTS			NA
TOTAL			\$52495

Customer Name:
Customer Address:

Customer Email:

Customer Phone:

*\$ 43,074.01
Out The Door
[Signature]*

Customer Signature

Date

This order has not been submitted to the order bank.

This is not an invoice.

TEXAS LOCAL GOVERNMENT PURCHASING COOPERATIVE

BUYBOARD

11/5/2019

PRODUCT PRICING BASED ON CONTRACT

Customer: Titus County
 Product Description: 2020 F550

A: Base Price in Bid/Proposal Number **521-16** \$ 27,449.00

B: Published Options [Itemize each item below]

99T Diesel Engine	\$ 9,980.00	\$ -
X4L 4.30 L/S Axle	\$ 650.00	\$ -
425 50 State Emissions	\$ 575.00	\$ -
52B Elect Brake Conmtroller	\$ 550.00	\$ -
535 High capacity Trailer Tow	\$ 1,565.00	\$ -
31S Ship through	\$ 650.00	\$ -
AF 40 Gal Rear Fuel w/Afterframe	\$ 950.00	\$ -
2020 Diesel engine increase	\$ 1,300.00	\$ -
2020 Chassis increase	\$ 1,200.00	\$ -
	\$ -	\$ -

Subtotal Column 1: \$ 17,420.00 Subtotal Column 2: \$ -

Published Options added to Base Price (Subtotal of "Col 1" + "Col 2") \$ 17,420.00

C: Subtotal of A + B => \$ 44,869.00

D: UnPublished Options _____ %

	\$ -	\$ -
	\$ -	\$ -
	\$ -	\$ -
	\$ -	\$ -

Subtotal Column 1: \$ - Subtotal Column 2: \$ -

Body \$ -

E: Contract Pride Adjustment (If any, explain here) additional Chassis discount \$ - \$ (500.00)

F: Total of C + D + E (Not including Buy Board Fee) => \$ 44,369.00

G: Quantity Ordered {Units x F} => # of Units 1 \$ 44,369.00

H: BUYBOARD Fee (From Fee Schedules, Table: _____ => @ _____ % \$ 400.00

I: Non-Equipment Charges & Credits (ie: Ext. Warranty, Trade-In, Cost of Factory trips, etc.)

	\$ -
	\$ -

Subtotal of Non-Equipment Charges \$ -

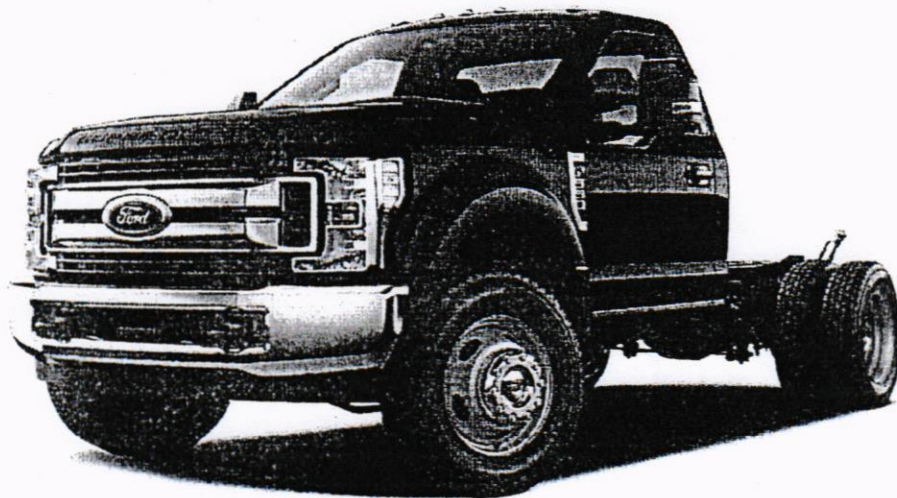
J: TOTAL PURCHASE PRICE INCLUDING {G + H + I} => \$ 44,769.00

Grande Truck Center
 PO Box 201210
 San Antonio, Texas 78220

Rocky Shoffstall
 PH 210-666-7112
 FX 210-666-7216
 800-779-7672 X112

2020 F-550 Chassis 4x2 SD Regular Cab 145" WB DRW XL (F5G)

Price Level: 20



Client Proposal

Prepared by:

ROCKY SHOFFSTALL

Office: 210-661-4121

Date: 11/05/2019





Prepared by: ROCKY SHOFFSTALL
11/05/2019

Grande Truck Center | 4562 IH 10 East San Antonio Texas | 782194205

2020 F-550 Chassis 4x2 SD Regular Cab 145" WB DRW XL (F5G)

Price Level: 20

Re: Vehicle Proposal 11/05/2019

To Whom It May Concern,

Thank you very much for your interest in acquiring a vehicle from our dealership. We concur that your interest is well deserved. We hope that an outstanding product lineup and our dedication to customer service will enhance your ownership experience should you decide to buy a vehicle from us.

Attached, please find additional information that I hope will assist you in making a more informed decision. Please feel free to contact me at any time as I would truly appreciate the opportunity to be of service to you.

Sincerely,

ROCKY SHOFFSTALL



Prepared by: ROCKY SHOFFSTALL
11/05/2019

Grande Truck Center | 4562 IH 10 East San Antonio Texas | 782194205

2020 F-550 Chassis 4x2 SD Regular Cab 145" WB DRW XL (F5G)

Price Level: 20

As Configured Vehicle

Code	Description
F5G	Base Vehicle Price (F5G)
660A	Order Code 660A <i>Includes:</i> - Transmission: TorqShift 10-Speed Automatic - Includes selectable drive modes: normal, tow/haul, eco and deep sand/snow. - GVWR: 18,000 lbs Payload Package - Tires: 225/70Rx19.5G BSW A/P - Optional spare is 225/70Rx19.5G BSW A/P. - Wheels: 19.5" Argent Painted Steel - HD Vinyl 40/20/40 Split Bench Seat - Includes center armrest, cupholder, storage and driver's side manual lumbar. - Radio: AM/FM Stereo w/MP3 Player - Includes 4 speakers. - SYNC Communications & Entertainment System - Includes enhanced voice recognition, 911 Assist, 4.2" LCD center stack screen, AppLink, 1 smart-charging USB-C port and steering wheel audio controls.
99T	Engine: 6.7L 4V OHV Power Stroke V8 Turbo Diesel B20 <i>Includes Diesel Exhaust Fluid (DEF) tank, intelligent oil-life monitor and manual push-button engine-exhaust braking</i> <i>Includes:</i> - Dual 78-AH 750 CCA Batteries - 240 Amp Alternator
44G	Transmission: TorqShift 10-Speed Automatic <i>Includes selectable drive modes: normal, tow/haul, eco and deep sand/snow.</i>
X4L	Limited Slip w/4.30 Axle Ratio
STDGV	GVWR: 18,000 lbs Payload Package
TGJ	Tires: 225/70Rx19.5G BSW A/P <i>Optional spare is 225/70Rx19.5G BSW A/P.</i>
64Z	Wheels: 19.5" Argent Painted Steel
A	HD Vinyl 40/20/40 Split Bench Seat <i>Includes center armrest, cupholder, storage and driver's side manual lumbar.</i>
PAINT	Monotone Paint Application
145WB	145" Wheelbase
STDRD	Radio: AM/FM Stereo w/MP3 Player <i>Includes 4 speakers</i> <i>Includes:</i> - SYNC Communications & Entertainment System - Includes enhanced voice recognition, 911 Assist, 4.2" LCD center stack screen, AppLink, 1 smart-charging USB-C port and steering wheel audio controls.
535	High Capacity Trailer Tow Package

Prices and content availability as shown are subject to change and should be treated as estimates only. Actual base vehicle, package and option pricing may vary from this estimate because of special local pricing, availability or pricing adjustments not reflected in the dealer's computer system. See salesperson for the most current information.



Prepared by: ROCKY SHOFFSTALL
11/05/2019

Grande Truck Center | 4562 IH 10 East San Antonio Texas | 782194205

2020 F-550 Chassis 4x2 SD Regular Cab 145" WB DRW XL (F5G)

Price Level: 20

As Configured Vehicle (cont'd)

Code	Description
	<i>Trailer brake controller not included. Includes upgraded rear axle. Increases GCW from 32,500 lbs. to 40,000 lbs. Note: Salesperson's Portfolio or Trailer Towing Guide should be consulted for specific trailer-towing or camper limits and corresponding required equipment, axle ratios and model availability. See Supplemental Reference for vehicle height consideration.</i>
52B	Trailer Brake Controller <i>Includes smart trailer tow connector. Verified to be compatible with electronic actuated drum brakes only.</i>
425	50-State Emissions System
AS_01	Medium Earth Gray
Z1_01	Oxford White

Prices and content availability as shown are subject to change and should be treated as estimates only. Actual base vehicle, package and option pricing may vary from this estimate because of special local pricing, availability or pricing adjustments not reflected in the dealer's computer system. See salesperson for the most current information.



Prepared by: ROCKY SHOFFSTALL

11/05/2019

Grande Truck Center | 4562 IH 10 East San Antonio Texas | 782194205

2020 F-550 Chassis 4x2 SD Regular Cab 145" WB DRW XL (F5G)

Price Level: 20

Selected Equip & Specs

Dimensions

- Exterior length: 230.7" • Cab to axle: 60.0" • Exterior width: 80.0" • Exterior height: 81.7" • Wheelbase: 145.0" • Front track: 74.8" • Rear track: 74.0" • Turning radius: 21.2' • Rear tire outside width: 93.9" • Min ground clearance: 8.2" • Front legroom: 43.9" • Front headroom: 40.8" • Front hiproom: 62.5" • Front shoulder room: 66.7" • Passenger volume: 64.6cu.ft.
- Cargo volume: 11.6cu.ft. • Maximum cargo volume: 11.6cu.ft.

Powertrain

- *** Powerstroke 330hp 6.7L OHV 32 valve intercooled turbo V-8 engine with diesel direct injection * Recommended fuel : diesel • federal • TorqShift 10 speed automatic transmission with overdrive • Rear-wheel drive * Limited slip differential • Fuel Economy Cty: N/A • Fuel Economy Highway: N/A**

Suspension/Handling

- Front Mono-beam non-independent suspension with anti-roll bar, HD shocks • Rear DANA M300 rigid axle leaf spring suspension with anti-roll bar, HD shocks • Firm ride Suspension • Hydraulic power-assist re-circulating ball Steering • Front and rear 19.5 x 6 argent steel wheels • LT225/70SR19.5 GBSW AS front and rear tires • Dual rear wheels

Body Exterior

- 2 doors • Driver and passenger , manual folding door mirrors • Black door mirrors • Black bumpers • Trailer harness • Clearcoat paint • Front and rear 19.5 x 6 wheels • 2 front tow hook(s)

Convenience

- Manual air conditioning with air filter • Manual front windows • Manual door locks • Manual tilt steering wheel • Manual telescopic steering wheel • Day-night rearview mirror • FordPass Connect 4G LTE WiFi internet access • 911 Assist emergency SOS • Wireless phone connectivity • AppLink smart device integration • 2 1st row LCD monitors • Front cupholders • Passenger visor mirror • Upfitter switches

Seats and Trim

- Seating capacity of 3 • Front 40-20-40 split-bench seat • 4-way driver seat adjustment • Manual driver lumbar support • 4-way passenger seat adjustment • Centre front armrest with storage

Entertainment Features

- AM/FM stereo radio • SYNC external memory control • Steering wheel mounted radio controls • 4 speakers • Streaming audio • Fixed antenna

Lighting, Visibility and Instrumentation

- Halogen aero-composite headlights • Delay-off headlights • Fully automatic headlights • Variable intermittent front windshield wipers • Light tinted windows • Front reading lights • Tachometer • Compass • Outside temperature display • Trip computer • Trip odometer

Safety and Security

Prices and content availability as shown are subject to change and should be treated as estimates only. Actual base vehicle, package and option pricing may vary from this estimate because of special local pricing, availability or pricing adjustments not reflected in the dealer's computer system. See salesperson for the most current information.



Prepared by: ROCKY SHOFFSTALL
11/05/2019

Grande Truck Center | 4562 IH 10 East San Antonio Texas | 782194205

2020 F-550 Chassis 4x2 SD Regular Cab 145" WB DRW XL (F5G)

Price Level: 20

Selected Equip & Specs (cont'd)

• 4-wheel ABS brakes • Brake assist • 4-wheel disc brakes • Driveline traction control • Dual front impact airbag supplemental restraint system with passenger cancel • Dual seat mounted side impact airbag supplemental restraint system • Safety Canopy System curtain 1st row overhead airbag supplemental restraint system • Manual door locks • Manually adjustable front head restraints

Dimensions

General Weights

* Curb	7,406 lbs.	GVWR	18,000 lbs.
* Payload	10,610 lbs.		

Front Weights

* Front GAWR	5,200 lbs.	* Front curb weight	4,257 lbs.
Front axle capacity	7,000 lbs.	* Front spring rating	5,200 lbs.
Front tire/wheel capacity	7,500 lbs.		

Rear Weights

Rear GAWR	13,660 lbs.	* Rear curb weight	3,149 lbs.
Rear axle capacity	13,660 lbs.	* Rear spring rating	15,000 lbs.
Rear tire/wheel capacity	15,000 lbs.		

Trailer Type

Harness	Yes	Trailer sway control	Yes
---------	-----	----------------------	-----

General Trailering

5th-wheel towing capacity	20600 lbs.	Gooseneck towing capacity	20600 lbs.
Towing capacity	18500 lbs.	* GCWR	40000 lbs.

Fuel Tank type

Capacity	40 gal.
----------	---------

Off Road

Min ground clearance	8 "
----------------------	-----

Interior cargo

Cargo volume	11.6 cu.ft.	Maximum cargo volume	11.6 cu.ft.
--------------	-------------	----------------------	-------------

Rear Frame

Height loaded	29 "	Height unloaded	35 "
---------------	------	-----------------	------

Powertrain

Engine Type

* Brand	Powerstroke	Block material	Iron
Cylinders	V-8	Head material	Aluminum

Prices and content availability as shown are subject to change and should be treated as estimates only. Actual base vehicle, package and option pricing may vary from this estimate because of special local pricing, availability or pricing adjustments not reflected in the dealer's computer system. See salesperson for the most current information.



Prepared by: ROCKY SHOFFSTALL
11/05/2019

Grande Truck Center | 4562 IH 10 East San Antonio Texas | 782194205

2020 F-550 Chassis 4x2 SD Regular Cab 145" WB DRW XL (F5G)

Price Level: 20

Selected Equip & Specs (cont'd)

* Ignition	Compression	* Injection	Diesel direct injection
* Liters	6.7L	Orientation	Longitudinal
* Recommended fuel	Diesel	* Valves per cylinder	4
Valvetrain	OHV	* Forced induction	Intercooled turbo
<i>Engine Spec</i>			
* Bore	3.90"	* Compression ratio	16.2:1
* Displacement	406 cu.in.	* Stroke	4.25"
<i>Engine Power</i>			
SAEJ1349 AUG2004 compliant	Yes	* Output	330 HP @ 2,600 RPM
* Torque	750 ft.-lb @ 2,000 RPM		
<i>Alternator</i>			
Type	HD	Amps	240
<i>Battery</i>			
Amp hours	78	Cold cranking amps	750
Run down protection	Yes	* Type	Dual
<i>Transmission</i>			
Electronic control	Yes	Lock-up	Yes
Overdrive	Yes	Speed	10
Type	Automatic		
<i>Transmission Gear Ratios</i>			
1st	4.696	2nd	2.985
3rd	2.146	4th	1.769
5th	1.52	6th	1.275
7th	1	8th	0.854
9th	0.689	10th	0.616
Reverse Gear ratios	4.866		
<i>Transmission Extras</i>			
Driver selectable mode	Yes	Sequential shift control	SelectShift
Oil cooler	Regular duty		
<i>Drive Type</i>			
Type	Rear-wheel		
<i>Drive Feature</i>			
* Limited slip differential	Mechanical	Traction control	Driveline
<i>Drive Axle</i>			
* Ratio	4.3		
<i>Exhaust</i>			

Prices and content availability as shown are subject to change and should be treated as estimates only. Actual base vehicle, package and option pricing may vary from this estimate because of special local pricing, availability or pricing adjustments not reflected in the dealer's computer system. See salesperson for the most current information.



Prepared by: ROCKY SHOFFSTALL
11/05/2019

Grande Truck Center | 4562 IH 10 East San Antonio Texas | 782194205

2020 F-550 Chassis 4x2 SD Regular Cab 145" WB DRW XL (F5G)

Price Level: 20

Selected Equip & Specs (cont'd)

Material	Stainless steel	System type	Single
<i>Emissions</i>			
CARB	Federal		
<i>Fuel Economy</i>			
* Fuel type	Diesel		
<i>Engine Retarder</i>			
* Type	Yes		
Driveability			
<i>Brakes</i>			
ABS	4-wheel	ABS channels	3
Type	4-wheel disc	Vented discs	Front and rear
<i>Brake Assistance</i>			
Brake assist	Yes		
<i>Suspension Control</i>			
Ride	Firm		
<i>Front Suspension</i>			
Independence	Mono-beam non-independent	Anti-roll bar	Regular
<i>Front Spring</i>			
Type	Coil	Grade	Regular
<i>Front Shocks</i>			
Type	HD		
<i>Rear Suspension</i>			
Independence	DANA M300 rigid axle	Type	Leaf
Anti-roll bar	Regular		
<i>Rear Spring</i>			
Type	Leaf	Grade	HD
<i>Rear Shocks</i>			
Type	HD		
<i>Steering</i>			
Activation	Hydraulic power-assist	Type	Re-circulating ball
<i>Steering Specs</i>			
# of wheels	2		

Exterior

Prices and content availability as shown are subject to change and should be treated as estimates only. Actual base vehicle, package and option pricing may vary from this estimate because of special local pricing, availability or pricing adjustments not reflected in the dealer's computer system. See salesperson for the most current information.



Prepared by: ROCKY SHOFFSTALL

11/05/2019

Grande Truck Center | 4562 IH 10 East San Antonio Texas | 782194205

2020 F-550 Chassis 4x2 SD Regular Cab 145" WB DRW XL (F5G)

Price Level: 20

Selected Equip & Specs (cont'd)

Front Wheels

Diameter 19.5" Width 6.00"

Rear Wheels

Diameter 19.5" Width 6.00"
Dual Yes

Front and Rear Wheels

Appearance Argent Material Steel

Front Tires

Aspect 70 Diameter 19.5"
Sidewalls BSW Speed S
Tread AS Type LT
Width 225mm LT load rating G
RPM 647

Rear Tires

Aspect 70 Diameter 19.5"
Sidewalls BSW Speed S
Tread AS Type LT
Width 225mm LT load rating G
RPM 647

Wheels

Front track 74.8" Rear track 74.0"
Turning radius 21.2' Wheelbase 145.0"
Rear tire outside width 93.9"

Body Features

Front license plate bracket Yes Front splash guards Yes
Body material Aluminum Side impact beams Yes
Front tow hook(s) 2

Body Doors

Door count 2

Exterior Dimensions

Length 230.7" Body width 80.0"
Body height 81.7" Cab to axle 60.0"
Axle to end of frame 47.2" Frame section modulus 12.7cu.in.
Frame yield strength (psi) 50000.0 Frame rail width 34.2"
Front bumper to Front axle 38.3" Cab to end of frame 107.2"
Front bumper to back of cab 123.7"

Prices and content availability as shown are subject to change and should be treated as estimates only. Actual base vehicle, package and option pricing may vary from this estimate because of special local pricing, availability or pricing adjustments not reflected in the dealer's computer system. See salesperson for the most current information.



Prepared by: ROCKY SHOFFSTALL
11/05/2019

Grande Truck Center | 4562 IH 10 East San Antonio Texas | 782194205

2020 F-550 Chassis 4x2 SD Regular Cab 145" WB DRW XL (F5G)

Price Level: 20

Selected Equip & Specs (cont'd)

Safety

Airbags

Driver front-impact	Yes	Driver side-impact	Seat mounted
Overhead Safety Canopy System curtain 1st row		Passenger front-impact	Cancellable
Passenger side-impact	Seat mounted		

Seatbelt

Height adjustable	Front
-------------------	-------

Seating

Passenger Capacity

Capacity	3
----------	---

Front Seats

Split	40-20-40	Type	Split-bench
-------	----------	------	-------------

Driver Seat

Fore/aft	Manual	Reclining	Manual
Way direction control	4	Lumbar support	Manual

Passenger seat

Fore/aft	Manual	Reclining	Manual
Way direction control	4		

Front Head Restraint

Control	Manual	Type	Adjustable
---------	--------	------	------------

Front Armrest

Centre	Yes	Storage	Yes
--------	-----	---------	-----

Front Seat Trim

Material	Vinyl	Back material	Vinyl
----------	-------	---------------	-------

Convenience

AC And Heat Type

Air conditioning	Manual	Air filter	Yes
------------------	--------	------------	-----

Audio System

Radio	AM/FM stereo	Radio grade	Regular
Seek-scan	Yes	External memory control	SYNC

Audio Speakers

Speaker type	Regular	Speakers	4
--------------	---------	----------	---

Prices and content availability as shown are subject to change and should be treated as estimates only. Actual base vehicle, package and option pricing may vary from this estimate because of special local pricing, availability or pricing adjustments not reflected in the dealer's computer system. See salesperson for the most current information.



Prepared by: ROCKY SHOFFSTALL
11/05/2019

Grande Truck Center | 4562 IH 10 East San Antonio Texas | 782194205

2020 F-550 Chassis 4x2 SD Regular Cab 145" WB DRW XL (F5G)

Price Level: 20

Selected Equip & Specs (cont'd)

Audio Controls

Steering wheel controls	Yes	Voice activation	Yes
Streaming audio	Bluetooth yes		

Audio Antenna

Type	Fixed
------	-------

LCD Monitors

1st row	2	Primary monitor size (inches)	4.2
---------	---	-------------------------------	-----

Convenience Features

12V DC power outlet	2	Emergency SOS	911 Assist
Wireless phone connectivity	Bluetooth	Smart device integration	App link
Upfitter switches	Yes		

Door Lock Activation

Type	Manual
------	--------

Door Locks Extra FOB Controls

Remote engine start	Smart device
---------------------	--------------

Instrumentation Type

Display	Analog
---------	--------

Instrumentation Gauges

Tachometer	Yes	Engine temperature	Yes
* Turbo/supercharger boost	Yes	Transmission fluid temp	Yes
Engine hour meter	Yes		

Instrumentation Warnings

Oil pressure	Yes	Engine temperature	Yes
Battery	Yes	Lights on	Yes
Key	Yes	Low fuel	Yes
Door ajar	Yes	Service interval	Yes
Brake fluid	Yes		

Instrumentation Displays

Clock	In-radio display	Compass	Yes
Exterior temp	Yes	Systems monitor	Yes

Instrumentation Feature

Trip computer	Yes	Trip odometer	Yes
---------------	-----	---------------	-----

Steering Wheel Type

Material	Urethane	Tilting	Manual
Telescoping	Manual		

Prices and content availability as shown are subject to change and should be treated as estimates only. Actual base vehicle, package and option pricing may vary from this estimate because of special local pricing, availability or pricing adjustments not reflected in the dealer's computer system. See salesperson for the most current information



Prepared by: ROCKY SHOFFSTALL
11/05/2019

Grande Truck Center | 4562 IH 10 East San Antonio Texas | 782194205

2020 F-550 Chassis 4x2 SD Regular Cab 145" WB DRW XL (F5G)

Price Level: 20

Selected Equip & Specs (cont'd)

Front Side Windows

Window 1st row activation Manual

Window Features

Tinted Light

Front Windshield

Wiper Variable intermittent

Rear Windshield

Window Fixed

Interior

Passenger Visor

Mirror Yes

Rear View Mirror

Day-night Yes

Headliner

Coverage Full Material Cloth

Floor Trim

Coverage Full Covering Vinyl/rubber

Trim Feature

Gear shift knob Urethane Interior accents Chrome

Lighting

Dome light type Fade Front reading Yes
Variable IP lighting Yes

Storage

Front Beverage holder(s) Yes Glove box Locking
Illuminated Yes Instrument panel Covered bin
Dashboard Yes

Legroom

Front 43.9"

Headroom

Front 40.8"

Hip Room

Front 62.5"

Shoulder Room

Prices and content availability as shown are subject to change and should be treated as estimates only. Actual base vehicle, package and option pricing may vary from this estimate because of special local pricing, availability or pricing adjustments not reflected in the dealer's computer system. See salesperson for the most current information.



Prepared by: ROCKY SHOFFSTALL

11/05/2019

Grande Truck Center | 4562 IH 10 East San Antonio Texas | 782194205

2020 F-550 Chassis 4x2 SD Regular Cab 145" WB DRW XL (F5G)

Price Level: 20

Selected Equip & Specs (cont'd)

Front	66.7"
<i>Interior Volume</i>	
Passenger volume	64.6 cu.ft.

Prices and content availability as shown are subject to change and should be treated as estimates only. Actual base vehicle, package and option pricing may vary from this estimate because of special local pricing, availability or pricing adjustments not reflected in the dealer's computer system. See salesperson for the most current information.



Prepared by: ROCKY SHOFFSTALL
11/05/2019

Grande Truck Center | 4562 IH 10 East San Antonio Texas | 782194205

2020 F-550 Chassis 4x2 SD Regular Cab 145" WB DRW XL (F5G)

Price Level: 20

Warranty

Standard Warranty

Basic

Distance	36,000 miles	Months	36 months
----------	--------------	--------	-----------

Powertrain

Distance	60,000 miles	Months	60 months
----------	--------------	--------	-----------

Corrosion Perforation

Distance	Unlimited miles	Months	60 months
----------	-----------------	--------	-----------

Roadside Assistance

Distance	60,000 miles	Months	60 months
----------	--------------	--------	-----------

Prices and content availability as shown are subject to change and should be treated as estimates only. Actual base vehicle, package and option pricing may vary from this estimate because of special local pricing, availability or pricing adjustments not reflected in the dealer's computer system. See salesperson for the most current information.